

**ITEM NO. : 16**

**ITEM : TOP MOUNTED MAGNETIC LEVEL INDICATOR DRAG OR ROLLER TYPE  
LEVEL INDICATION AND WITH OR WITHOUT SWITCHES.  
REFER OUR G. A. DRG.NO.RTMLIDA-1022-A/O (OR) RTMLIRA-1023-A/O**

### PRINCIPLE OF OPERATION :

Here in this case this Indicator is used as a direct local level indicator mounted on top of the vessel or RCC tank. The float is made out of SS304/SS316/PP/PVC/PTFE/PVDF. As the level inside the tank rises the float, which buoys up, moves the connecting pipe to the region of visibility on top.

Moreover there will be clamp on type Magnetic Switches are provided as per your request having repulsion type magnetic arrangement to have the actuation at desired levels. These switches are housed in a Cast Aluminium enclosure and they are adjustable over the entire range of the Level Indicator.

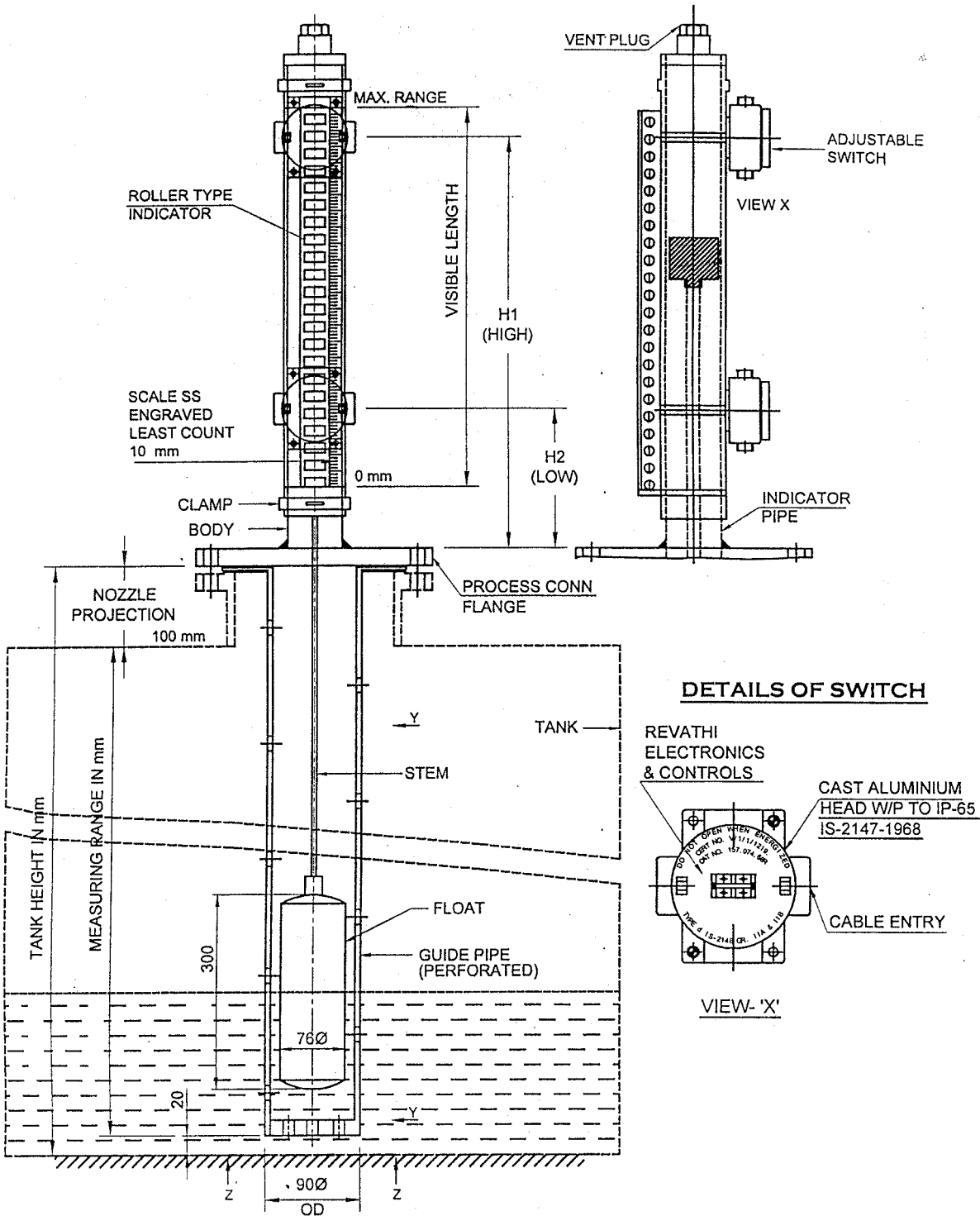
### DETAILS OF MAGNETIC SWITCH :

The basic switch used in all case will be of imported origin and sealed type. The switch used is hermetically sealed, inert gas filled magnetic switch with gold plated contacts of the following specifications.

### MATERIAL SPECIFICATIONS :

- |  |   |  |
|--|---|--|
| 1. Type  | : | Top mounted level indicator with Drag / Roller type with / without switches  |
| 2. Process conn. Flange size & rating                  | : | 4" BS 10 table 'E' or 4" ANSI 150 RF B 16.5  |
| 3. Service   | : | To mention   |
| 4. Op. pressure Kg/Cm <sup>2</sup> g/temp. ° C /Sp.Gr. | : | To mention   |
| 5. Hydro test pressure Kg/Cm <sup>2</sup> g            | : | 1.5 times of max. Op. Pressure   |
| 6. All wetted parts material                           | : | SS 304 / SS 316 / PP/ PVC/ HDPE/PVDF   |
| 7. Material of Flange                                  | : | CS with SS lipping to have wetted parts as SS.   |
| 8. Float Material                                      | : | SS 304 / SS 316 / PP/ PVC/ HDPE /PVDF  |
| 9. Guide Pipe Material                                 | : | SS 304 / SS 316 / PP/ PVC/ PVDF  |
| 10. Mounting   | : | Tank top   |
| 11. Scale  | : | Acrylic / SS white background with black markings in cms. Lines are engraved @ each 10 mm. i.e. ± 10 mm could be adjusted  |
| 12. Indicator accuracy                                 | : | ± 10 mm  |
| 13. Measuring range                                    | : | To mention   |
| 14. Glass tube Material                                | : | Transparent Borosilicate   |
| 15. Contact Rating                                     | : | 230 VAC 5 Amps (Surge) 60 VAW in the case of SPDT switch can directly operate 110/230 VAC Siemens or L&T size 1 contactor. |
| 16. Max..Initial contact resistance                    | : | 150 milli ohms   |
| 17. Max. Operate time                                  | : | 0.5 milli second   |
| 18. Max. Release time                                  | : | 0.1 milli second   |
| 19. Life expectancy                                    | : | 100 million operations   |
| 20. Basic Switch                                       | : | Will have SPDT   |
| 21. Alarms / Qty                                       | : | If required will be provided as per our general arrangement DRG NO. RTMLIDA-1022-A/O (OR) RTMLIRA-1023-A/O                 |
| 22. Enclosure  | : | Weatherproof or flameproof   |
| 23. Cable entry  | : | ¾" ET (F)  |
| 24. Quantity   | : | To Mention   |

TOP MOUNTED ROLLER TYPE MAGNETIC LEVEL INDICATOR  
WITH SWITCHES



1. TOP MOUNTED LEVEL INDICATOR WITH ROLLER TYPE INDICATOR W/P & FLP SWITCHES  
DRG NO. RTMLIRA-1023-A/O

2. TOP MOUNTED LEVEL INDICATOR WITH DRAG TYPE INDICATION W/P & FLP SWITCHES  
DRG NO. RTMLIDA-1022-A/O